

# Huayu Data Logger Quick Installation Guide

## 1. Connect to Power Grid

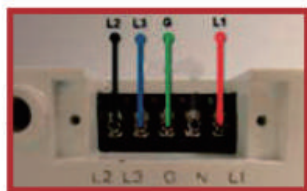
Plug the AC power cord into a dedicated power outlet. Then data logger will take several minutes to boot up once connected,.

### Note:

- a. HY-MDL data logger works on voltages between 100Vac - 240Vac.
- b. Install the data logger on a dedicated outlet as close to the solar-fed circuit breaker as possible.
- c. Do not plug the data logger into a power strip, GFDI outlet or through an ELCB.
- d. For split-phase power grid (U.S., Canada, Mexico, Japan, Phillipine), we recommend using NEMA 6-15 240V power outlet.



For HY-MDL-3 data logger, connects to a 3-phase power grid directly.



**U.S., Japan, Canada  
Mexico, Phillipine**



**Australia  
New Zealand**

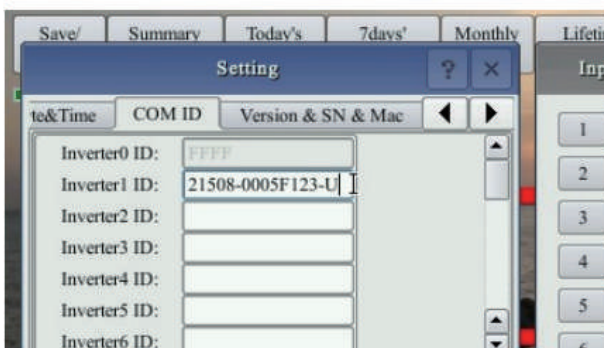


**Europe**

## 2. Input Microinverter Serial Number

Method A. Input the SN through Data Logger Touch Screen.

Method B. Input the SN through Built-In Web Page.



(e.g. <http://10.208.32.52/module>) 10.208.32.52 is the data logger IP at the bottom of the touch screen.

### Inverter COM-ID Administration

e.g. 21508-4005F123-U, input the whole string or '0005F123' or '5F123'

submit	
Inverter1:	<input type="text" value="30000020"/>
Inverter2:	<input type="text" value="3000AFE0"/>
Inverter3:	<input type="text" value="30032EE0"/>
Inverter4:	<input type="text" value="00000534"/>
Inverter5:	<input type="text" value="3003AB00"/>
Inverter6:	<input type="text" value="3003AB01"/>

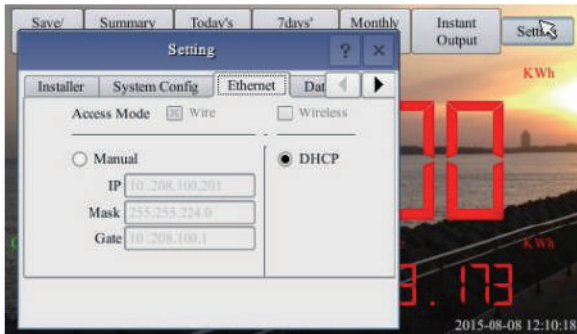
**S/N format:** (e.g. 21508-3005F121-U, input the whole string "21508-3005F121-U" or "3005F121")

**Phase assignment:** A-(L1-L3 or L1-N), B-(L2-L3 or L2-N), C-(L1-L2 or L3-N) (U.S or Europe/Australia)

### 3. Connect to Internet

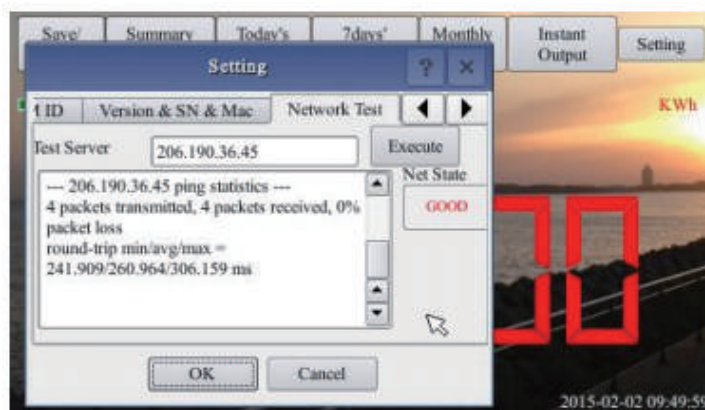
Connect to internet by using a cable, or use the default option "DHCP".

Refer to "Wi-Fi Configuration Guide" for setting up Wi-Fi

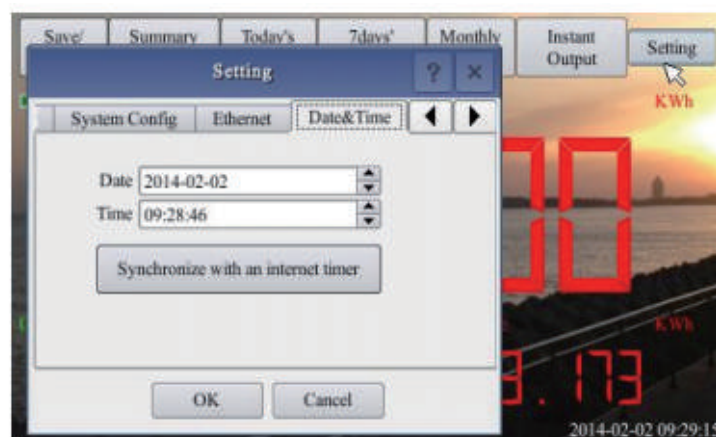


### 4. Test Network Connection

Navigate through "Setting" to "Network Test", and then click on "Execute". If the "Next State" shows GOOD, then the data logger has connected to internet.

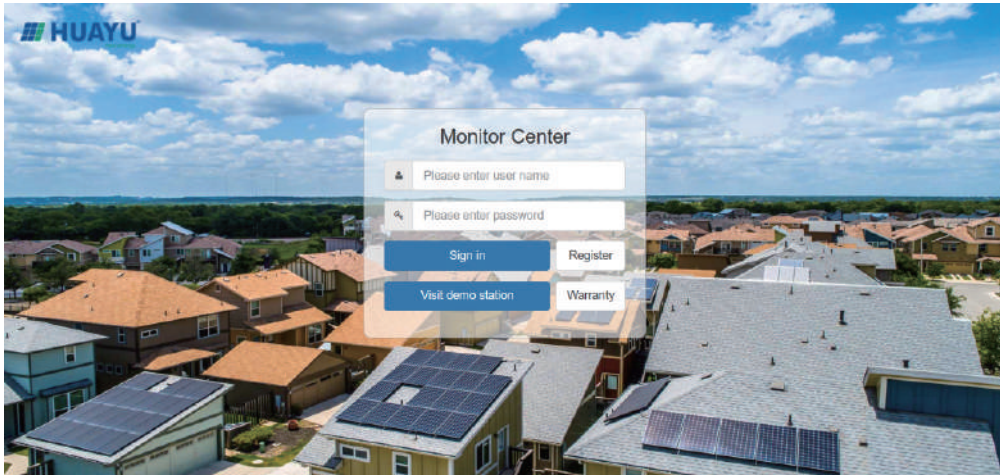


### 5. Set Date&Time



Huayu Portal Remote Monitoring

<https://www.huayumonitoring.com/>



**Note:** Huayu Portal supports IE 9.0 or later, Firefox, Chrome, Apple iOS and Android web browsers.

Follow the instructions and fill in information

**Step 1.** Register User Account

Verification code is sent to the email address registered.

**Step 2.** Add PV Site Information

Each PV site requires two registered email addresses: end user and installer

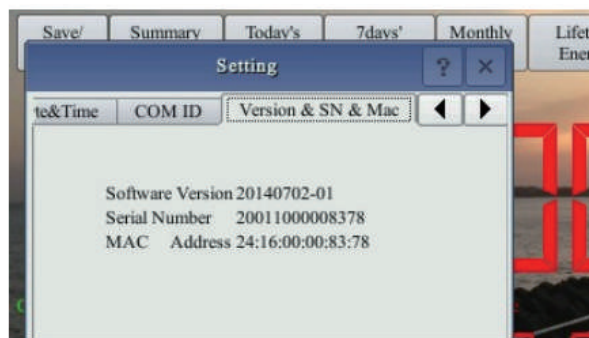
### Step 3. Register A Data Logger

Add HY-MDL data logger SN in the PV site information

Preview

Gateway S/N

HY-MDL data logger SN can be found on touch screen "Setting/ Version & SN & Mac".



### Microviewer Local Monitoring

HY-MDL can be monitored by a smart device connected to the same router.



Data Logger IP Address

**Note:** Microviewer local monitoring uses HY-MDL IP address as the link to an internal webpage.



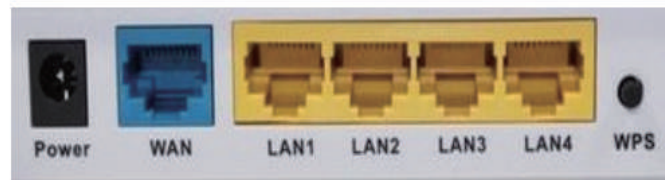
## Wi-Fi Configuration Guide

### Method A: By Routers Support WPS

**Step 1.** Plug the wireless adapter to HY-MDL data logger, and wait for several seconds.



**Step 2.** Press the WPS button on the router for 2 seconds, and for most routers, the WPS button would flash at this point.



**Step 3.** Within 2 minutes, return to the HY-MDL data logger, click on Setting/Ethernet, and press “WPS” (the red button). If the data logger reports the WPS setup is successful, the IP address on the data logger screen will be updated instead of 0.0.0.0 within 5 minutes.



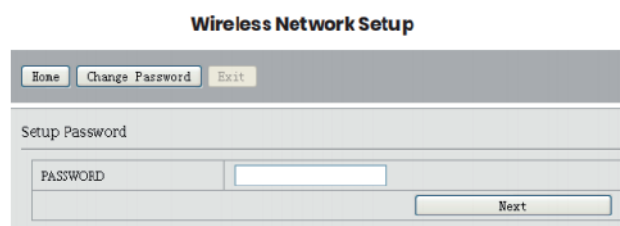
### Method B: By Routers Do Not Support WPS

**Step 1.** Connect the HY-MDL data logger to a router with a cable, and a few seconds later, an IP address will appear at the bottom of the HY-MDL screen.

**Step 2.** Log on to the webpage: [http://MDL\\_IP/wifi](http://MDL_IP/wifi) (MDL-IP refers to the IP shown at the bottom of HY-MDL screen, e.g. 10.208.32.52).

**Step 3.** Set Wi-Fi parameters.

Enter the password “data logger”





Set WLAN parameters and save your settings



**SSID:** The name of the home wireless network.

**Security Type:** The wireless adapter supports several security protocols. Please refer to the wireless router user's manual for suitable type (default one works for most routers).

**Password:** The password for home wireless network.

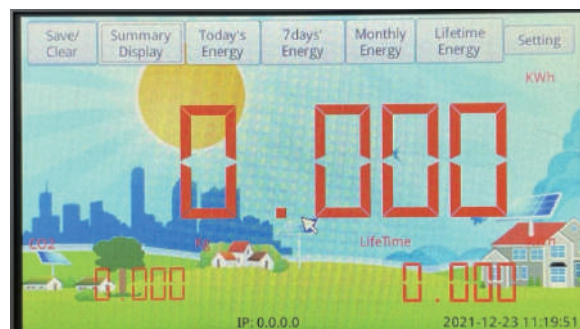
**DHCP:** If yes, the wireless router will assign an IP to the data logger.

This is most commonly used (no need to change unless for advanced users).

**IP:** If DHCP is set to "NO", users could fix an IP to the data logger.

This function is only for advanced users, who should be responsible for confliction with other network devices if this IP address is not set properly.

**Step 4.** Plug in the wireless adapter, and then reboot data logger.



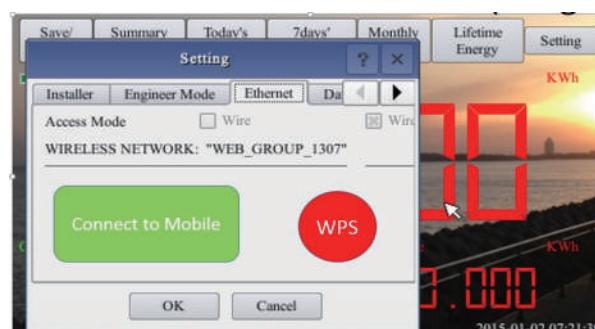
If Wi-Fi is connected, a signal strength bar at the left upper corner and an IP address at the bottom should be notified.

### Method C: By Smart Mobile Devices

**Step 1.** On an iPhone, click on Settings/General/About, input name "MI Installer".

**Step 2.** Turn on "Personal Hotspot", and input Wi-Fi Password "my-data logger". This password is for other devices such as the HY-MDL data logger to connect to this mobile device.

**Step 3.** On the HY-MDL data logger, click on Setting/Ethernet, and choose "Connect to Mobile" or "Link to Mobile" (the green button).



**Step 4.** If the connection has been set, a flashing banner “Personal Hotspot: 1 Connection” will appear at the top of the iPhone screen.

**Step 5.** Continue from Step-3 of [Method B](#).

**Step 6.** After using the hot-spot communication, Wi-Fi setup can be restored, if the Wi-Fi configuration in HY-MDL data logger is not changed by hot-spot link. First hit on the button “Disconnect from Mobile” (see Step-3), and reboot the data logger, then the Wi-Fi connection will be restored.

**Note:** 1. Set the name of the hotspot link as “MI Installer” ; 2. Set the password of the hotspot link as “my-data logger”.

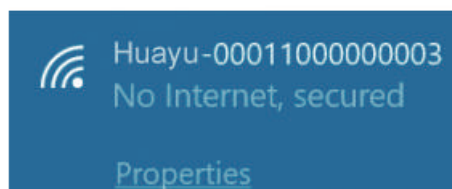
### Method D: Using AP (Access Point) Mode

**Step 1.** Click on the AP button on the HY-MDL data logger and follow the instructions to reboot the data logger. Note that after reboot the IP address at the bottom of the data logger is 192.168.99.1



**Note:** This method only applies to HY-MDL data loggers with firmware version “20170701-01” or later, and with the “TP-LINK” Wi-Fi dongle shipped inside the HY-MDL box.

**Step 2.** Search for a Wi-Fi network named Huayu-xxxxxxxxxxxxx (xxxxxxxxxxxxx is the data logger SN) on a phone or computer, and link the phone or computer to this Wi-Fi network, the password is 12345678.



**Step 3.** Log on to the web page: <http://192.168.99.1/wifi>, enter password data logger.

**Step 4.** The pull down menu SSID List shows all available Wi-Fi networks. Click on “Search Wi-Fi” may rescan the available Wi-Fi networks. If the Wi-Fi network is “hidden” and does not show on the list, the network name can also be input manually on the line of SSID.

## Wireless Network Setup

Home
Change Password
Exit

WLAN Settings:

SSID List	<input type="text" value=" &lt; SSID &gt;"/>	<input type="button" value="Search WiFi"/>
SSID	<input type="text" value=" &lt; SSID &gt;"/>	
Security Type	<input type="text" value="KX-HNB700_DAB203"/>	
Password	<input type="text" value="SherwoodForest"/>	
DHCP	<input type="text" value="Amped_Rep_2.4GHz"/>	
IP Address	<input type="text" value="Paul3"/>	
	<input type="text" value="SM Home2"/>	
	<input type="text" value="YES"/>	
	<input type="text"/>	<input type="button" value="Save"/>

**SSID:** The name of the home wireless network.

**Security Type:** The wireless adapter supports several security protocols.

Please refer to the wireless router user's manual for suitable type (default one works for most routers).

**Password:** The password for home wireless network.

**DHCP:** If yes, the wireless router will assign an IP to the data logger.

This is most commonly used (no need to change unless for advanced users).

**IP:** If DHCP is set to "NO", users could fix an IP to the data logger.

This function is only for advanced users, who should be responsible for confliction with other network devices if this IP address is not set properly.

**Step 5.** Click on Save. Uncheck AP on the HY-MDL data logger touch screen and then reboot the data logger following instructions.

If Wi-Fi is connected, a signal strength bar at the left upper corner and an IP address at the bottom should be notified.